

Features

Connectivity

- PCIe/104 OneBank (USB Interface)

Analog Inputs

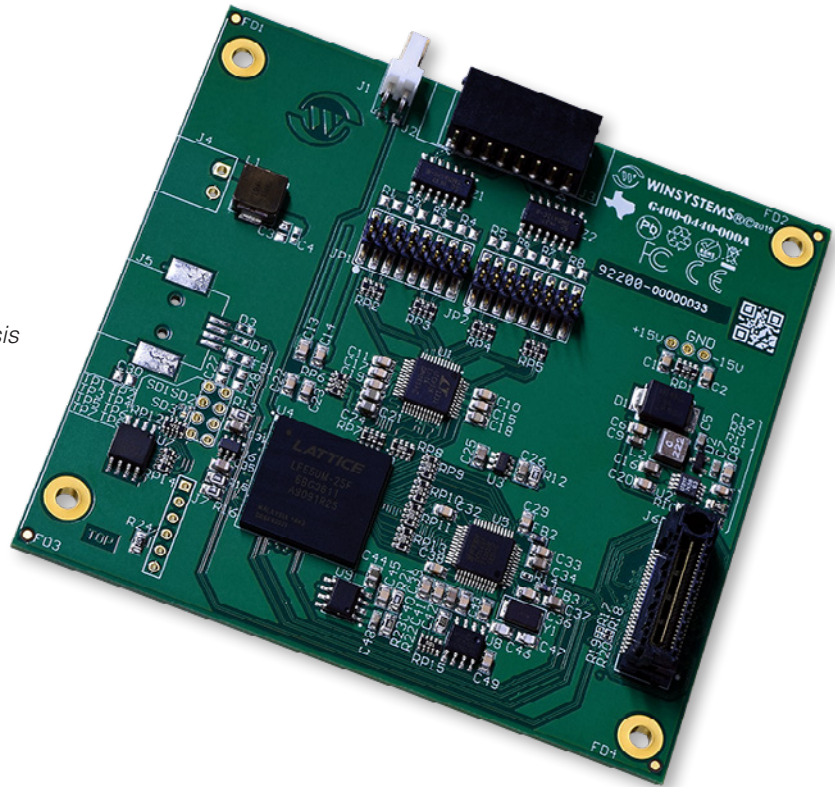
- 16-bit Analog-to-Digital (ADC) Converter
- Wide Common Mode Range Inputs
- Eight Analog Input Ranges:
0V-5V, 0V-5.12V, $\pm 5V$, $\pm 5.12V$, 0V to 10V,
0V to 10.24V, $\pm 10V$, $\pm 10.24V$
Configurable on a conversion-by-conversion basis
- 8x Differential Input Channels support both Bipolar or Unipolar Inputs
- Available with 4-20mA Input Configuration

Capabilities

- Sample Rate up to 1MSPS in Burst Mode
- Test Jumpers Provide On-board Voltages
- Programmable to cycle through a sequence of channels and ranges

Rugged Design for Demanding Environments

- -40°C to +85°C Operating Temperature Range
- PC/104 Form Factor
- Shock and Vibration Tested

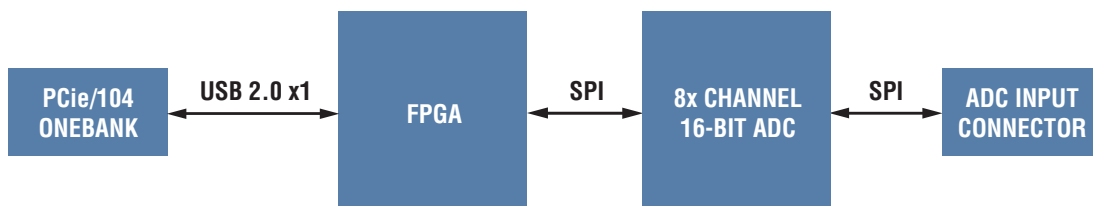


Product Description

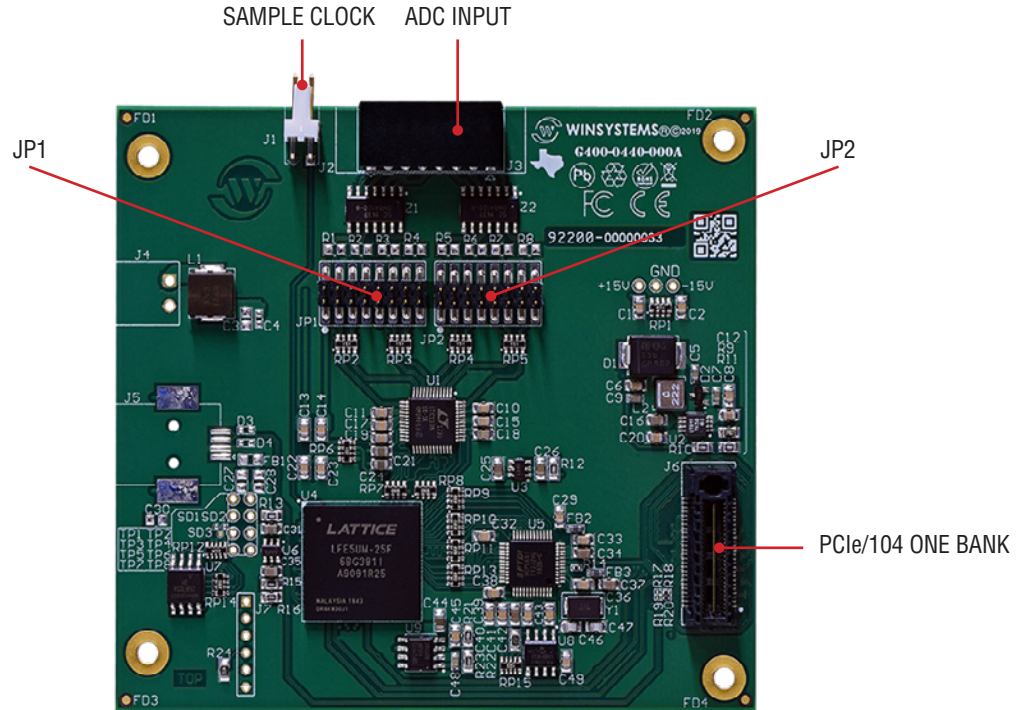
The PX1-I440-ADC is an industrial data acquisition module for embedded systems with PCIe/104 OneBank™ expansion. This module features eight differential ADC (Analog-to-Digital converter) inputs based on the Analog Devices LTC2335-16 ADC. Analog to digital inputs terminate to a single 16-pin Box Header. The PX1-I440-ADC provides flexible voltage ranges from 0V-5V, 0V-5.12V, $\pm 5V$, $\pm 5.12V$, 0V to 10V, 0V to 10.24V, $\pm 10V$, $\pm 10.24V$.

The PX1-I440-ADC-420 configuration includes precision resistors on-board for measuring 4-20mA current loop inputs from a variety of sensors. Customized populations are available for OEM clients that need a mix of 4-20mA and Voltage inputs.

Block Diagram



Connectors



Technical Specifications

ADC MODULE	PX1-I440-ADC 16-bit, Linear Technology LTC2335-16 analog-to-digital converter	PX1-I440-ADC-420 16-bit, Linear Technology LTC2335-16 analog-to-digital converter
CHANNELS	<ul style="list-style-type: none"> Eight Differential Inputs: <ul style="list-style-type: none"> Configurable as Bipolar or Unipolar Programmable to cycle through a sequence of channels and ranges 	
ADC POWER RANGES	<ul style="list-style-type: none"> 0-5V, 0V-5.12V, ±5V, ±5.12V, 0V to 10V, 0V to 10.24V, ±10V, ±10.24V 	<ul style="list-style-type: none"> 4mA to 20mA
SOFTWARE	<ul style="list-style-type: none"> Compatible with Linux, Windows 10 	
ENVIRONMENTAL	<ul style="list-style-type: none"> Operational from -40°C to +85°C RoHS compliant 	
MECHANICAL	<ul style="list-style-type: none"> Dimensions – 3.55 x 3.775 inches (90 x 96 mm) Weight – 0.1 oz (100g) 	

Order Information

PART NUMBER	PX1-I440-ADC Industrial Analog-to-Digital Data Acquisition Module	PX1-I440-ADC-420 Industrial Analog-to-Digital Data Acquisition Module with 4mA to 20mA support
--------------------	---	--

Expansion and Customization Options

WinSystems provides additional cables, expansion cards, power supplies, and solid-state drives to complete your embedded computing solution including data acquisition, communications, location, and other features via PCIe/104 and M.2 interfaces. Our Application Engineers are available to guide you through product selection and customized options.