

### Features

- Universal AC input: 88 to 264VAC
- Output voltage is +5V @ 5A full load
- No fan required, convection cooling
- Short circuit protection
- Overload and overvoltage protection
- Withstands 300VAC input surge for 5 seconds
- Complies with safety, EMI, and EMS standards
- LED indicator for Power-On visual status
- Output voltage adjustable
- High efficiency, long life, high reliability
- Operating temperature: -20° to +70°C
- Small size: 79 x 51 x 28mm

### Product Description

WinSystems' PS-RS25-5 is a small, convection cooled 25W power supply for embedded systems. It is a universal design that accepts 88 to 264VAC input and generates up to 5A of current at +5 volts. The +5 volt output can be adjusted with an on board trimpot. The PS-RS25-5 is small, measuring only 79 x 51 x 28mm.

The unit meets various safety and EMC standards. It is UL60950-1 and TUV EN60950-1 approved. For EMI and conduction and radiation, it is compliant to EN55022 (CISPR22) Class B. It also is compliant with EN1000-4-2, 3, 4, 5, 6, 8, 11: ENV50204, EN61000-6-2 (EN50082-2) heavy industry criteria A for EMS immunity.

There are five different ordering options. The variations are defined by the DC harness for our single board computers (SBCs) in the PC/104, SUMIT-ISM, EPIC, or EBX form factors or no DC harness at all.

#### Technical Support and Custom Configurations -

WinSystems offers free support to speed your initial design cycle into production. Our engineers are dedicated to answering your questions.

If you do not see a product or feature listed in our literature that you require, please contact us. We may have a product in development or can modify existing product to serve your needs.

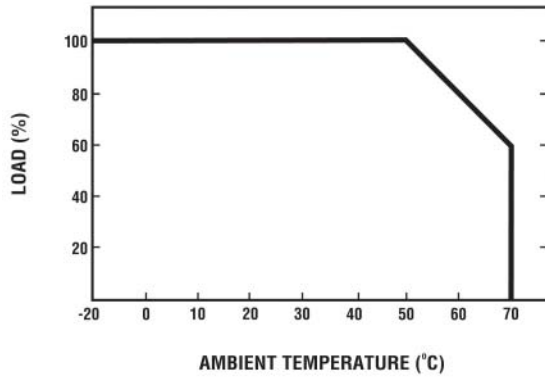


### Specifications

|                    |                       |                              |
|--------------------|-----------------------|------------------------------|
| <b>Output</b>      | DC Voltage            | 5V                           |
|                    | Rated Current         | 5A                           |
|                    | Current Range         | 0~5A                         |
|                    | Rated Power           | 25W                          |
|                    | Ripple & Noise (max.) | 80mV p-p                     |
|                    | Voltage Adj. Range    | 4.75~5.5V                    |
|                    | Voltage Tolerance     | ±2%                          |
|                    | Line Regulation       | ±0.5%                        |
|                    | Load Regulation       | ±1.0%                        |
|                    | Setup, Rise Time      | 2200mS, 30mS                 |
|                    |                       | 115VAC (full load)           |
|                    | Hold Time (typ.)      | 14 mS/115VAC                 |
|                    | Voltage Range         | 88~264VAC                    |
|                    | Frequency Range       | 47~63Hz                      |
| <b>Input</b>       | Efficiency (typ.)     | 77%                          |
|                    | AC Current (typ.)     | 0.7A/115VAC                  |
|                    | Inrush Current (typ.) | 30A/230VAC                   |
|                    |                       | cold start                   |
|                    | Leakage Current       | <2mA/240VAC                  |
| <b>Protection</b>  | Over Load             | 110~150% rated output power  |
|                    |                       | Recovers after fault removed |
|                    | Over Voltage          | 5.75~6.75V                   |
|                    |                       | Recovers after fault removed |
|                    |                       | -25° to +70°C                |
| <b>Environment</b> | Humidity              | 20~85 RH non-condensing      |
|                    | Storage Temperature   | -40° to +85°C                |
|                    | Temp Coefficient      | ±0.03%/°C                    |
|                    | Vibration             | 10~500Hz, 5G                 |
| <b>Other</b>       | MTBF                  | 309,700 hours                |
|                    | Dimensions (LWH)      | 79 x 51 x 28mm               |
|                    | Weight                | 0.35 lbs, 0.16 kg            |

# PS-RS25-5 - 25 Watt Power Supply

## Output Derating Curve

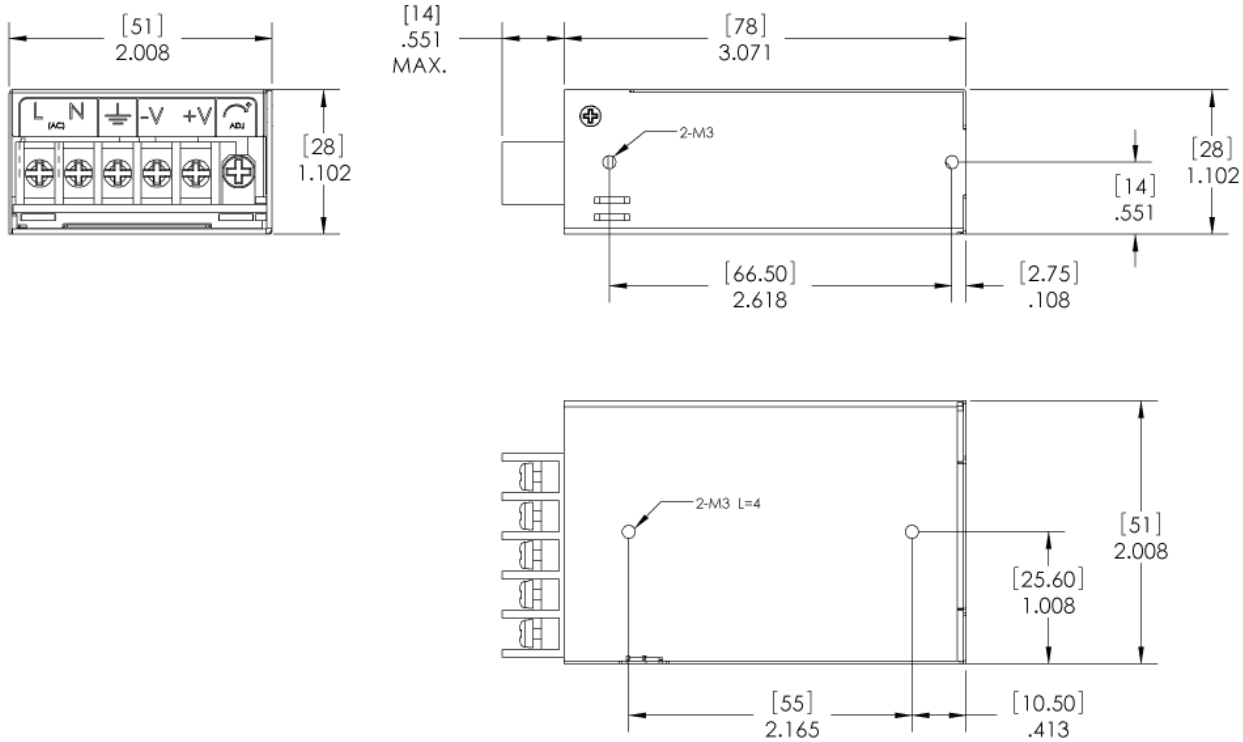


## Ordering Information

|               |  |
|---------------|--|
| PS-RS25-5-0   | 25W power supply   |
| PS-RS25-5-EBC | 25W power supply with AC Power cord and DC cable for EBX SBCs        |
| PS-RS25-5-EPX | 25W power supply with AC Power cord and DC cable for EPIC SBCs       |
| PS-RS25-5-PCM | 25W power supply with AC Power cord and DC cable for PC/104 SBCs     |
| PS-RS25-5-PXM | 25W power supply with AC Power cord and DC cable for SUMIT-ISM™ SBCs |

WinSystems reserves the right to make changes to products and/or documentation without further notification. Product names of other companies may be trademarks of their companies.

## Mechanical dimensions of the PS-RS25-5 without cables attached



## Terminal Pin Number Assignment

| Pin No. | Assignment   |
|---------|--------------|
| 1       | AC/L         |
| 2       | AC/N         |
| 3       | GND          |
| 4       | DC Output -V |
| 5       | DC Output +V |



**Parhelia B.V.**  
[www.parhelia-bv.com](http://www.parhelia-bv.com)  
 ☎+31(0)10 741 00 28

