

NPC-8208

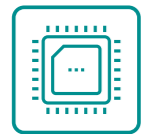
Network Application Platform

NPC-8208 is a standard 2U rack network application platform based on 6/7th Gen Intel® Xeon® E3 and Intel® Core™ i7/i5/i3 series processor. Its motherboard contains Intel® C236 chip, and its total memory capacity is up to 64GB. The platform supports single power supply, redundant power supply, or DC power supply. The platform adopts a modular design, and by configuring network modules, it can support up to 32 x high-performance Gigabit LAN port and 16 groups of Bypass.

The product can be widely used in high-end network security applications such as enterprise firewalls, enterprise antivirus walls, load balancing, and application delivery.



Product Features



Supports multiple series processors



4 x memory slot



Multiple hard disk bay



Multiple LAN ports



Hard disk encryption



Supports rapid customization

Product Dimensions Drawing



Product Specifications

Item	Description	
System Configuration	Processor	Supports i3, i5, i7 Core™ 6/7th Gen processors in LGA1151 package, Xeon® E3-1200 v5, v6 series
	Chipset	Intel® C236
	Memory	4 x DDR4 memory slot, supporting un-buffered ECC memory or Non-ECC memory, the total memory capacity of the PC up to 64GB
Storage Port	SATA	3 x SATA 3.0 interface (expansion up to 5)
	Cfast	1 x Cfast slot (optional, occupying 1 x SATA3.0 resource)
IO Ports	USB	2 x USB2.0 (at front) 4 x USB pin (built-in)
	COM	1 x RJ45 Console port (at front) 1 x RS232COM port pin (built-in)
Display Port	1 x VGA port	
Network Chip	Intel® i211	
LAN Port	Onboard 1 x Gigabit LAN port	
GPIO	The motherboard supports 8 x GPIO port	
Expansion Bus	PCIE	Onboard 1 x PCIE 8X (X4 signal, sharing resource with one ENS slot)
	ENS	4 x ENS expansion slot
Matched Motherboard	NET-1825VDN(B) series	
Working Environment	Temperature: 0°C~40°C Humidity: 10%~95% (non-condensing)	
Storage Environment	Temperature: -20°C-70°C Humidity: 10%-95% (non-condensing)	
Power Supply	250W single power supply/350W ATX redundant power supply	
Dimensions (W×H×D)	440mm (W) × 88mm(H) × 550mm(D)	
Supported Operating System	Linux OS system (kernel version above 2.6)	

Ordering Information

Part No.	Model	Description
0010-086671	NPC-8208/NET-1825/ i3-6100/8GB/ 500G/250W single power supply	Standard 2U rack mount Intel® C236 modular network application platform complete PC/ i3-6100 CPU/8GB DDR4 memory/500GB hard disk/onboard 1 x LAN port/4 x ENS network card expansion module bay, expandable to 32 x LAN port/1 x PCIE 8X slot (occupying one ENS slot) /standard configuration 250W single power supply
0010-086661	NPC-8208/NET-1825/ i3-6100/8GB/ 500G/350W redundant power supply	Standard 2U rack mount Intel® C236 modular network application platform complete PC/i3-6100 CPU/8GB DDR4 memory/500GB hard disk/onboard 1 x LAN port/4 x ENS network card expansion module bay, expandable to 32 x LAN port/1 x PCIE 8X slot (occupying one ENS slot) /standard configuration 350W redundant power supply
0010-093131	NPC-8208/NET-1825/ i7-6700/8GB/ 500G/350W redundant power supply	Standard 2U rack mount Intel® C236 modular network application platform complete PC/i7-6700 CPU/8GB DDR4 memory/500GB hard disk/onboard 1 x LAN port/4 x ENS network card expansion module bay, expandable to 32 x LAN port/1 x PCIE 8X slot (occupying one ENS slot) /standard configuration 350W redundant power supply
0010-093141	NPC-8208/NET-1825/ E3-1275V5/8GB*2PCS /500G*2PCS/350W redundant power supply	Standard 2U rack mount Intel® C236 modular network application platform complete PC/ E3-1275V5/8GB*2PCSDDR4 memory/ 500GB*2PCS hard disk/supports Raid 0或Raid 1 /5 x LAN port/3 x ENS network card expansion module bay, expandable to 20 x LAN port/1 x PCIE 8X slot (occupying one ENS slot) /standard configuration 350W redundant power supply

Note: The final interpretation rights for product specifications, ordering information, etc. belong to EVOC Intelligent Technology Co., Ltd.