

N35-03

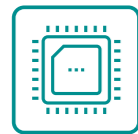
Network Application Platform

N35-03 is a 1U rack mount network application platform based on Intel Coffee Lake CPU Xeon® E-series or 8/9th Gen Intel® Core® i7/i5/i3 processor. Its motherboard contains Intel® C246 chipset, and the platform adopts a standard 2U, 19" rack mount and modular structure design, which facilitates expansion to network and storage functions. N35 has onboard 2 x Gigabit electrical ports, supporting up to 8 x ENS expansion slot, and up to 66 x LAN port. The platform supports IPMI remote management and can meet the needs of various network security applications in the market.



The platform can be widely used to meet the hardware requirements of enterprises for load balancing, data audit, application delivery, online behavior management and audit, next Gen firewall, traffic management, VPN, IDS/IPS, UTM and other network security service applications.

Product Features



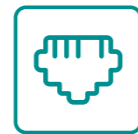
Supports multiple series processors



4 x memory slot



Supports forced Bypass switch



2 x Gigabit electrical port

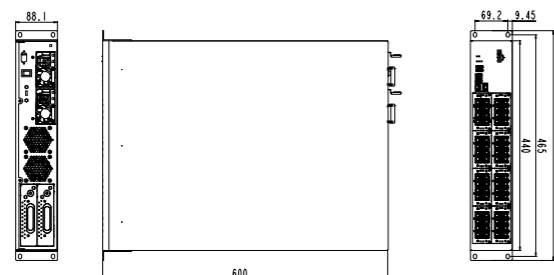


Multiple expansion slots, supporting expansion to 64 x Gigabit LAN port



Supports hard disk encryption, intrusion detection and BPI port

Product Dimensions Drawing



Please refer to the user manual to check detailed specifications and dimension. (Unit: MM)

Product Specifications

Item	Description	
System Configuration	Processor	LGA1151 package Intel® Coffee Lake-S, Xeon® Processor E Family, Core™ i7/i5/i3 8/9th Gen processors, Celeron, Pentium, and other processors, LGA1151 package Intel® Coffee Lake-S, Xeon® Processor E Family, Core™ i7/i5/i3 8/9th Gen processor, Celeron, Pentium and other processors
	Chipset	Intel®C246
	Memory	Provides 4 x DDR4 memory slot, supporting Un-buffered ECC and Non-memory ECC, the PC supporting up to 128GB;
Storage Ports	SATA	Onboard 2 x SATA 3.0 (one is shared with MSATA)
	MSATA	1 x MSATA slot (occupying 1 x SATA 3.0 resource)
IO Ports	USB	2 x USB3.0 port (external) , 2 x USB3.0 pin (built-in)
	COM	1 x RJ45 Console port (external) , 1 x RS-232COM port pin (built-in)
Display Port	VGA	
Network Chip	Intel®i211	
LAN Ports	Onboard 2 x Gigabit electrical port for the PC; Solution 1: 6 x Gigabit electrical port+4 x Gigabit optical port+5 x expansion port Solution 2: 6 x Gigabit electrical port+4 x Gigabit optical port+7 x expansion port Solution 3: 2 x Gigabit electrical port+8 x expansion port Note: IPMI function is optional, and when IPMI is supported, one onboard electrical port will be occupied.	
GPIO	The motherboard supports 8-channel digital GPIO port	
Expansion Bus	PCIE	1 x PCIE 8X slot (X4 signal)
	ENS	5 x ENS expansion slot (7 x optional) , optional 4/6/8 x ENS expansion slot for N35-03-09 configuration
Matched Motherboard	NET-1836VD2N series	
Working Environment	Temperature: 0°C-40°C Humidity: 10%-95% (non-condensing)	
Storage Environment	Temperature: -20°C-70°C Humidity: 10%-95% (non-condensing)	
Power Supply	Supports 350W redundant AC power supply (250W single power supply optional)	
Dimensions (W×H×D)	440mm (W) × 88mm(H) × 550mm(D)	
Supported Operating System	Linux OS system (kernel version above 2.6)	

Ordering Information

Part No.	Model	Description
0010-152681	N35-03-07/E-2278GE/8G /1T/5ENS/350W redundant	Standard 2U rack mount N35-03-07/E-2278GE/8G/6 x Gigabit electrical port(2BP)4 x Gigabit optical port/1T/5ENS/350W redundant
0010-152691	N35-03-08/I7-8700/8G /1T/7ENS/350W redundant	Standard 2U rack mount N35-03-08/I7-8700/8G/6 x Gigabit electrical port (2 groups of BYPASS) 4 x Gigabit optical port/1T/7ENS/350W redundant
0010-166291	N35-03-09/I7-8700/16G*2/1T/8ENS/350W redundant	Standard 2U rack mount N35-03-09/I7-8700/8G/6 x Gigabit electrical port (2 groups of BYPASS) 4 x Gigabit optical port/1T/8ENS/350W redundant

Note: The final interpretation rights for product specifications, ordering information, etc. belong to EVOC Intelligent Technology Co., Ltd.