

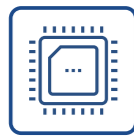
# EC3-1821

## 3.5" Single Board Computer

EC3-1821 is a standard 3.5" motherboard which contains onboard Intel high-performance low-power Skylake-U series processors, has multiple IO ports, supports multiple display ports, multiple U ports, multiple COM ports, one Mini-pcie port, one SIM card slot, one M-Sata interface and one self-defined expansion port. The motherboard can be widely used in industries such as machine vision, intelligent robot, medical care, and automation.



### Product Features



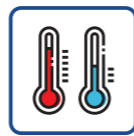
Onboard low-power processors



Multiple IO ports

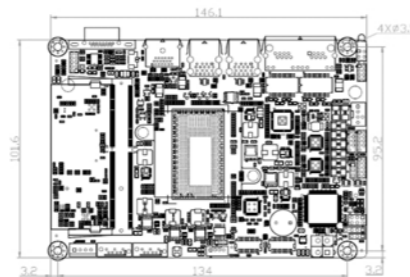


Self-defined expansion port



Optional wide-temperature environment

### Product Dimensions Drawing



### Product Specifications

| Item                | Description  |
|---------------------|--|
| Processor           | Onboard I7-6600U 2.6Ghz, I5-6300U 2.4Ghz, I3-6100U 2.3Ghz, 3955U 2.0Ghz processors                                       |
| Chipset             | SkyLake-U  |
| Memory              | 1 x 260Pin DDR4 memory slot, supporting up to 16G  |
| Display Ports       | VGA, HDMI, LVDS  |
| Audio Ports         | Supports MIC-IN/LINE-IN/LINE-OUT   |
| LAN                 | 2 x 10/100/1000Mbps LAN port   |
| Storage             | 2 x SATA3.0 port, 1 x mSATA  |
| IO Ports            | 2 x COM port, supporting RS-232/RS-422/RS-485 mode selection<br>4 x USB3.0, 2 x USB2.0<br>1 x 8-channel digital I/O port |
| Bus Expansion       | 1 x Mini-pcie port, 1 x SIM card slot, 1 x self-defined expansion port   |
| Power Supply        | Single 12V power supply  |
| Working Environment | 0°C~60°C (standard configuration) , expandable temperature range: -40°C~85°C (optional)                                  |
| Storage Environment | -40°C~85°C   |
| Constant Damp Heat  | 40°C 95%RH, non-condensing   |
| Dimensions          | 146.1mm (L)×101.6mm (W)×26.7mm (H)   |
| Operating System    | WIN7, WIN10, LINUX systems   |

### Ordering Information

| Part No.    | Model            | Description  |
|-------------|------------------|--|
| 0030-022211 | EC3-1821-3955U   | 3.5" single board/onboard 3955U processor/1 x 260Pin DDR4 memory slot, supporting up to 16G/2 x SATA3.0/1 x M-sata/VGA+LVDS+HDMI/2 x Gigabit LAN port/2 x COM port/1 group of audio ports/4 x USB3.0, 2 x USB2.0/1 x Mini-pcie port/1 x SIM card slot/1 x 8-channel digital I/O port/1 x self-defined expansion port   |
| 0030-022151 | EC3-1821-I36100U | 3.5" single board/onboard I36100U processor/1 x 260Pin DDR4 memory slot, supporting up to 16G/2 x SATA3.0/1 x M-sata/VGA+LVDS+HDMI/2 x Gigabit LAN port/2 x COM port/1 group of audio ports/4 x USB3.0, 2 x USB2.0/1 x Mini-pcie port/1 x SIM card slot/1 x 8-channel digital I/O port/1 x self-defined expansion port |
| 0030-022221 | EC3-1821-I56300U | 3.5" single board/onboard I56300U processor/1 x 260Pin DDR4 memory slot, supporting up to 16G/2 x SATA3.0/1 x M-sata/VGA+LVDS+HDMI/2 x Gigabit LAN port/2 x COM port/1 group of audio ports/4 x USB3.0, 2 x USB2.0/1 x Mini-pcie port/1 x SIM card slot/1 x 8-channel digital I/O port/1 x self-defined expansion port |
| 0030-022231 | EC3-1821-I76600U | 3.5" single board/onboard I76600U processor/1 x 260Pin DDR4 memory slot, supporting up to 16G/2 x SATA3.0/1 x M-sata/VGA+LVDS+HDMI/2 x Gigabit LAN port/2 x COM port/1 group of audio ports/4 x USB3.0, 2 x USB2.0/1 x Mini-pcie port/1 x SIM card slot/1 x 8-channel digital I/O port/1 x self-defined expansion port |

Note: The final interpretation rights for product specifications, ordering information, etc. belong to EVOC Intelligent Technology Co., Ltd.