

# CPC-3816B

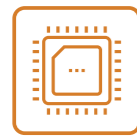
## 3U CompactPCI Motherboard

CPC-3816B is a standard 3U CompactPCI motherboard. The motherboard adopts the Skylake platform CM236 chipset, onboard latest 8GB DDR4 2133MT/s memory, and Intel's 6th Gen high-performance processor. Its graphics core integrates Intel® HD Graphics engine, supporting DX11 and 3D output. It has multiple IO ports, including 16G SSD onboard storage, 2 x VGA port, 1 x DP display port, 2 x USB3.0/USB2.0 port, 2 x USB2.0, 2 x COM port, 3 x SATA3.0 port, and 4 x Gigabit LAN port.

The main components of this product, such as processor, memory, and hard disk, adopt an onboard design, so as to ensure high reliability of the system as much as possible. It is designed for harsh environments such as aerospace, airborne and in-vehicle applications, and can meet the requirements of radar, high-speed communication, data acquisition, and other application fields. At the same time, the product design complies with the EN50155 specification. This product provides a highly reliable platform with excellent performance for rail transit applications.



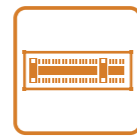
### Product Features



Onboard 6th Gen Skylake platform high-performance Intel® Core™ i7 processors



Onboard 8GB DDR4 memory, 16G SSD



Multiple IO ports, supporting multi-display function

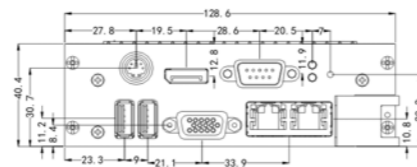
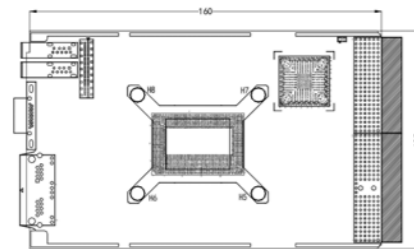


Conduction Rugged version to meet the requirements of rugged applications



Complies with EN50155 specifications, and meets the requirements of rail transit application

### Product Dimensions Drawing



Please refer to the user manual to check detailed specifications and dimension. (Unit: MM)

### Product Specifications

Item	Description	
System Configuration	Processor	Intel® Core™ i7-6822EQ processor 2.0GHz (8M Cache, up to 2.80 GHz, quad-core 8-thread), or Intel® Core™ i3-6102E 1.9GHz Processor(3M Cache dual-core 4-thread)
	Chipset	CM236 chipset
	Memory	Onboard 8G DDR4 memory, DRR4 2133 memory chip, supporting un-buffered NO ECC dual-channel function
Display Port	VGA×2 (one brought out from the backplane) , DP×1; supports triple display output under the operating system	
LAN	Front panel: 2 x Gigabit Ethernet port Rear panel: two independent 10/100/1000M Ethernet ports to the rear IO board	
IO Ports	USB: 4 x USB port, 2 at front panel, the other two brought out from the backplane COM: 1 x standard DB9COM port at front panel, supporting RS232/RS485/RS422; and 1 x DB9COM port on rear panel, supporting RS-232 Front panel PS/2 port×1	
Storage	Onboard SSD 16GB or mSATA (alternative) , simultaneously providing two-channel SATA signal brought out to rear IO board	
Working Temperature/Humidity	Working temperature: -20°C ~ +55°C Relative humidity: 5%~90% non-condensing	
Storage Environment	Temperature: -40°C~+85°C Humidity: 10%~95% (non-condensing)	
Mechanical Specifications	Dimensions: 160mm (L) × 100mm (W) × 8HP Shock: 20g, 11ms Vibration (5Hz-200Hz): 1.5g (working state) 2.0g (non-working state)	
Compatible Specifications	PICMG 2.0 R3.0 Compact PCI Specification	
Operating Systems	Windows7 32/64Bit, Windows8.1 64Bit, Linux;VxWorks	

\* As for environment, EMC and other indices, the Technical Agreement between the two parties shall prevail.

### Ordering Information

Part No.	Model	Description
0030-021351	CPC-3816B-01	Skylake/i7-6822EQ/8G DDR4/VGAx1/DPx1/SATA/onboard 16G SSD/LAN x2/COMx1
0030-021361	CPC-3816B-02	Skylake/i3-6102E/8G DDR4/VGAx1/DPx1/SATA /mSATAx1/LAN x2/COMx1
0030-021571	CPC-3816B-03	Skylake/i7-6822EQ/8G DDR4/VGAx1/DPx1/SATA /mSATAx1/LAN x2/COMx1
0030-021581	CPC-3816B-04	Skylake/ i3-6102E/8G DDR4/VGAx1/DPx1/SATA/onboard 16G SSD /LAN x2/COMx1
0060-005001	CPC-RP3816B	Rear IO board: VGAx1/SATA x2 /LAN x2/COM x1/USB x2

Note: The final interpretation rights for product specifications, ordering information, etc. belong to EVOC Intelligent Technology Co., Ltd.