

# CPC-3815B

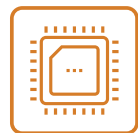
## 3U CompactPCI Motherboard

CPC-3815B is a standard 3U CompactPCI motherboard. The product contains Intel's® next Gen low-power and high-performance Atom processor, and its graphics core integrates Intel® HD 7th Gen graphics engine, supporting DX11 and 3D output. The product has onboard 4GB DDR3L 1333/1600MT/s memory, 16G SSD storage optional, and at the same time, offers VGA, Gigabit Ethernet port, COM port, USB, SATA, and audio ports. It can also provide more IO expansion possibilities by means of PMC ports.



The main components of this product, such as processor, memory, and hard disk, are all onboard. The conduction rugged version is specifically designed for harsh military environments and has features such as ultra-low power consumption, wide temperature range, vibration resistance and shock resistance. The product is also compatible with EN50155 and is an ideal platform for high reliability rail transit applications.

### Product Features



Onboard lower power processor



Can be matched with any memory



Suitable for PC fanless environment

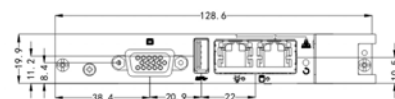
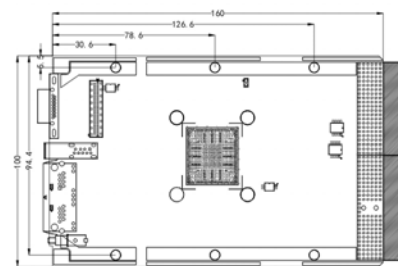


Conduction Rugged version to meet the requirements of rugged applications



Compatible with EN50155 industry standard

### Product Dimensions Drawing



Please refer to the user manual to check detailed specifications and dimension. (Unit: MM)

### Product Specifications

Item		Description
System Configuration	Processor	Intel® E3845(1.91 GHz)
	Memory	Onboard 4G DDR3 memory
Display port		Front panel: 1 x VGA Rear I/O board: 1 x VGA  Dual-display out, supporting dual-VGA display
LAN		Front panel: 2 x10/100/1000M Ethernet port Rear panel: two independent 10/100/1000M Ethernet ports to rear IO board (to be switched with 2-channel LAN ports on the front panel, chosen between the two by means of BIOS)
COM port		Front panel: the front panel provides 1 x standard DB9COM port, supporting RS232/422/485 (CPC-3815B-02/03) Rear I/O board: 1 x COM (RS232/422/485)
Audio		Front panel: Mic-in/Line-out (CPC-3815B-02/03)
USB		Front panel: 1 x USB 2.0 type A, 1 x USB 3.0 type A Rear I/O board: 2 x USB2.0
Storage		Onboard 16GB SSD, 1 x SATA 2.0 (switchable between front panel and rear IO board, front panel by default)
Working Temperature/Humidity		-40°C~+60°C fanless -40°C~+85°C, to be screened, forced air cooling Relative humidity: 5%-90% non-condensing Storage temperature: -40°C~+85°C
Mechanical Specifications		Dimensions: 3U 4/8HP CompactPCI 160mm (L) × 100mm (W) Shock: 20g, 11ms Vibration (5Hz-200Hz): 1.5g (working status) 2.0g (non-working status)
Compatible Specifications		PICMG 2.0 R3.0 Compact PCI Specification
Operating Systems		Win7, Win10, VxWorks 6.9, Linux

\* As for environment, EMC and other indices, the Technical Agreement between the two parties shall prevail.

### Ordering Information

Part No.	Model	Description
0030-021751	CPC-3815B-01	4HP single-slot/Baytrail-I/E3845(1.91GHz)/4G DDR3/onboard 16G SSD/VGAx1/LAN x2/USB3.0 x1
0030-022011	CPC-3815B-02	8HP dual-slot/Baytrail-I/E3845(1.91GHz)/4G DDR3/VGAx1/SATA/LAN x2/COM x1/USB3.0 x1/USB2.0 x1/PS/2 KB/MS/MIC-in/Line-out
0030-021761	CPC-3815B-03	8HP dual-slot/Baytrail-I/E3845(1.91GHz)/4G DDR3/onboard 16G SSD/VGAx1/SATA/LAN x2/COM x1/USB3.0 x1/USB2.0 x1/PS/2 KB/MS/MIC-in/Line-out
0030-022021	CPC-3815B-04	8HP dual-slot/Baytrail-I/E3845(1.91GHz)/4G DDR3/VGAx1/PMC/LAN x2/USB3.0 x1
0030-022031	CPC-3815B-05	8HP dual-slot/Baytrail-I/E3845(1.91GHz)/4G DDR3/onboard 16G SSD/VGAx1/PMC/LAN x2/USB3.0 x1
0030-022041	CPC-3815B-MIL	4HP single-slot/Baytrail-I/E3845(1.91GHz)/4G DDR3/onboard 16G SSD/rear IO ports: VGAx1/SATA x1/LAN x2/COM x1/USB2.0 x2/ PS/2(KB/MS)
0060-005021	CPC-RP3815B	Rear IO board: 8HP dual-slot/VGAx1/SATA x1/LAN x2/COM x1/USB2.0 x2
0030-023981	CPC-3815B-06 kit/three-proofing	8HP dual-slot/Baytrail-I/E3845(1.91GHz)/4G DDR3/onboard 16G SSD/VGAx1/SATA/LAN x2/COM x2/USB3.0 x1/USB2.0 x1/PS/2 KB/MS port

Note: The final interpretation rights for product specifications, ordering information, etc. belong to EVOC Intelligent Technology Co., Ltd.