

## 18.5" IP66 Stainless Steel Panel PC with 12th Gen Intel® Core™ or Intel® Celeron® Processor

### Overview

The 18.5-inch SPC-9185 stainless steel panel PC, powered by 12th Gen Intel® Core™ i5-1235U or Celeron® J6412 processors, is specifically designed for the food processing and pharmaceutical industries. Its housing is constructed from SUS 304/316 stainless steel with a seamless design, making it easy to clean and highly durable. The narrow bezel provides a modern, sleek appearance. The SPC-9185 is equipped with M12 I/O ports, meeting IP66 dust and waterproof standards, making it ideal for dusty, humid, or harsh environments.

### Features

- 12th Generation Intel® Core™ i5-1235U or Celeron® J6412 processor
- 18.5" stainless steel panel PC with capacitive or resistive touchscreen
- Seamless stainless steel SUS304/316 housing
- M12 I/O connectors
- -10 to 50°C wide operating temperature range
- Fanless and IP66 protection
- 9-36 VDC input



Operating Temp.



Fanless



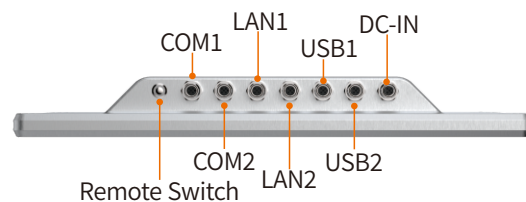
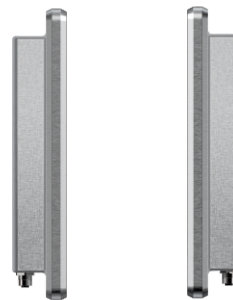
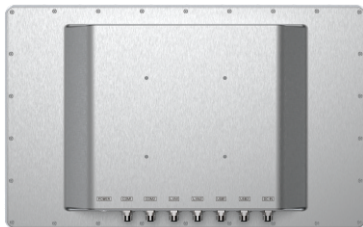
IP66



Touch Display



### I/O Interfaces



## Specifications

Display		
Size	18.5 inch	
Touch Type	Projected capacitive multi touch 5-wire resistive touch	
Transmittance	87% (capacitive) / 80% (resistive)	
Control Interface	USB	
Surface Hardness	≥7H for capacitive, ≥3H for resistive	
Resolution	1920 x 1080	
Luminance	300 nits	
Contrast Ratio	1000: 1	
View Angles	89 (left), 89 (right), 89 (up), 89 (down)	
LED Lifetime	30,000 hrs	
Color	16.7M	
System		
CPU	Intel® Celeron® J6412 (2.0 GHz) processor	Intel® Core™ i5-1235U (1.3 GHz) processor
Memory	1 x SO-DIMM DDR4-3200MHz, up to 16GB	2 x SO-DIMM DDR4-3200MHz, up to 64GB
Storage	1 x 2.5" SATA HDD/SSD (optional)	1 x 2.5" SATA HDD/SSD (optional)
	1 x full length Mini PCIe for mSATA SSD	1 x M.2 for 2280 NVME SSD
I/O Ports		
USB	4 x USB2.0	
Serial	2 x COM (Supports 2 x RS232 or 1 x RS232 and 1 x RS485)	
Ethernet	2 x GbE LAN	
RF Communication		
Wi-Fi	Wi-Fi 802.11 a/b/g/n/ac (Optional)	
Bluetooth	BT4.0 (Optional)	
Power		
Button	Yes	
DC Input	9-36 VDC	
Power Consumption	24W	29W
Power Mode	ATX	
Operating System		
Windows	Windows 10, Windows 11	
Mechanical		
Dimensions (W x D x H)	472.3 x 293 x 55 mm (18.6 x 11.5 x 2.2 inches)	
Weight (N.W.)	7.3 kg (16.1 lbs)	
Mounting	VESA 100	
Material	Stainless steel SUS 304 or 316 (optional)	
Environment		
Operating Temperature	-10°C to 50°C 14°F to 122°F) -20°C to 60°C (-4°F to 140°F)(with W.T. SSD/DRAM)	
Storage Temperature	-40 to 80°C (-40 to 176°F)	
Relative Humidity	5 to 90%, non-condensing	
IP Rating	IP66 compliant	
Packing List		
Packing List	1 x SPC-9185 2 x M12 to RJ45 Ethernet cable 2 x M12 to USB cable 2 x M12 to DB9 cable 1 x AC-DC power adapter 1 x AC power cord	

## Dimensions

