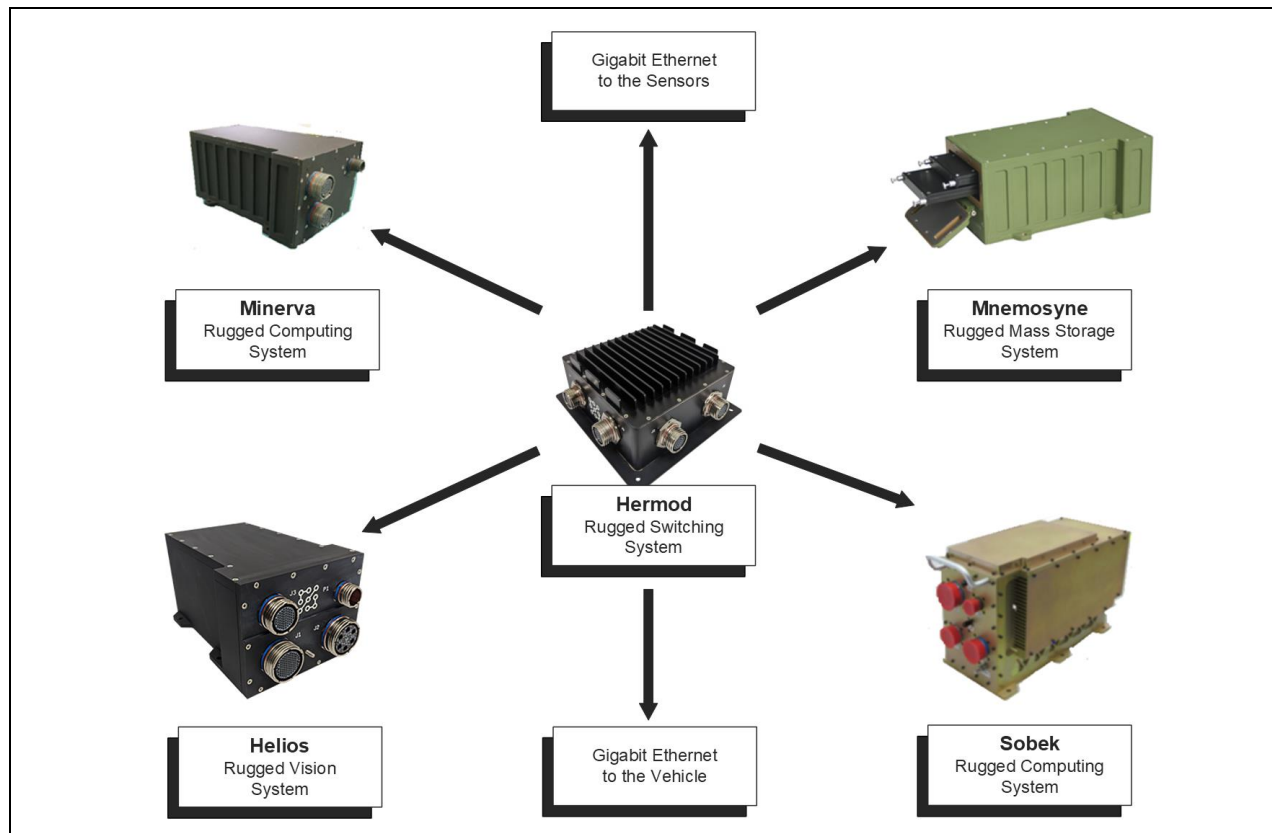


## Rugged 15-port Gigabit Ethernet Switching System

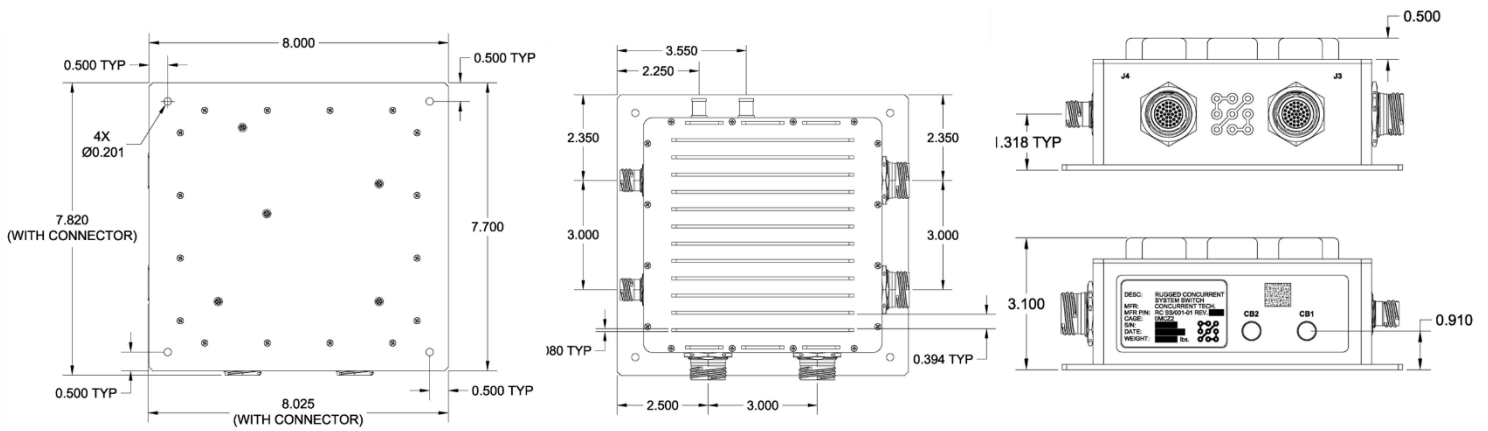
### Key Features

Hermod is a rugged Commercial Off the Shelf (COTS) Gigabit Ethernet switch optimized for Size, Weight, Power and Cost (SWaP-C) harsh environment embedded computer network applications. Featuring advanced Layer 2 switching with 15 ports of non-blocking 10/100/1000 Mbps connectivity.

- Managed Layer 2
- Designed to meet MIL-STD-810/ DO-160/ MIL-STD-704/ MIL-STD-461
- Operating Temperature -40°C to +55°C
- IP67 Dust/Waterproof Aluminium Chassis
- Circular Nickel PTFE MIL-DTL-38999 Connectors
- Security
- Line Rate Switching Engine
- Quality of Service (QoS)



# Specification



## Designed to Meet

- MIL-STD-810F
  - Operating Temp: -40°C to +55°C, methods 501.4 and 502.4
  - Non-operating / Storage temperature: -51°C to +85°C
  - Altitude: 27,000 ft operational, 65,000 ft non-operational, method 500.4
  - Vibration: 3.09g RMS 20-2000 Hz for 1 hour in each direction of 3 axes per 514.5 category 12
  - Shock: 10g peak sawtooth of 11ms all planes and both directions per 516.4-4
  - Acceleration, ±1.2 Gs in x-axis, ±1.0 Gs in y-axis, +5.0, -2.5 Gs in z-axis for one minute
  - Humidity, 95% non-condensing, method 507.1
  - Water Proofness
  - Bench Handling Shock
- RTCA DO-160D
  - Sand and Dust, 8.8g/m<sup>3</sup>, 0.5-2.5m/s
  - Explosion Proofness
  - Fluid Susceptibility
  - Icing
- MIL-STD-461E
  - CE102 section 3.2.1
  - CS101 curve #2 @ 28V
  - CS114 Navy, Aircraft Internal
  - CS115
  - CS116
  - RE102: fixed wing internal, per RE102-3
  - RS103: Air Force, Aircraft Internal
  - Lighting induced transient susceptibility per section 3.2.1.1
  - Electrostatic Discharge

## Power

- 28VDC, 17W
- OC, OV, and inrush protected
- Meets MIL-STD-704E (without 50 ms holdup)

## Mechanical

- Dimensions: 7.820" L x 8.025"W x 3.11"H
- Weight: 1.7 kg (3.7 lbs)

## Software Features

- Software Features can be accessed through the RS232 port, which uses a simple menu-driven interface to display the configuration and prompt for changes
- Built-In Test Responder:
  - Power-On BIT results
  - Periodic BIT results
  - Commanded BIT and results:
    - Memory tests
    - Virtual Cable Test
    - Loopback Test
- Authentication and Port Security:
  - Usernames and passwords
  - Ethernet Port Status
  - Ethernet Port Speed and Duplex
  - Ethernet Port Enable and Security
  - User Management
  - Set the IPv4 address and the IPv6 address
  - Display manufacturing data such as firmware version, serial number, assembly, revision, etc.



**Parhelia B.V.**  
[www.parheliabv.com](http://www.parheliabv.com)  
 ☎ +31(0)10 741 00 28